

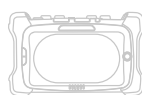
Enabling today,
Inspiring tomorrow.



KomShine Technologies Limited



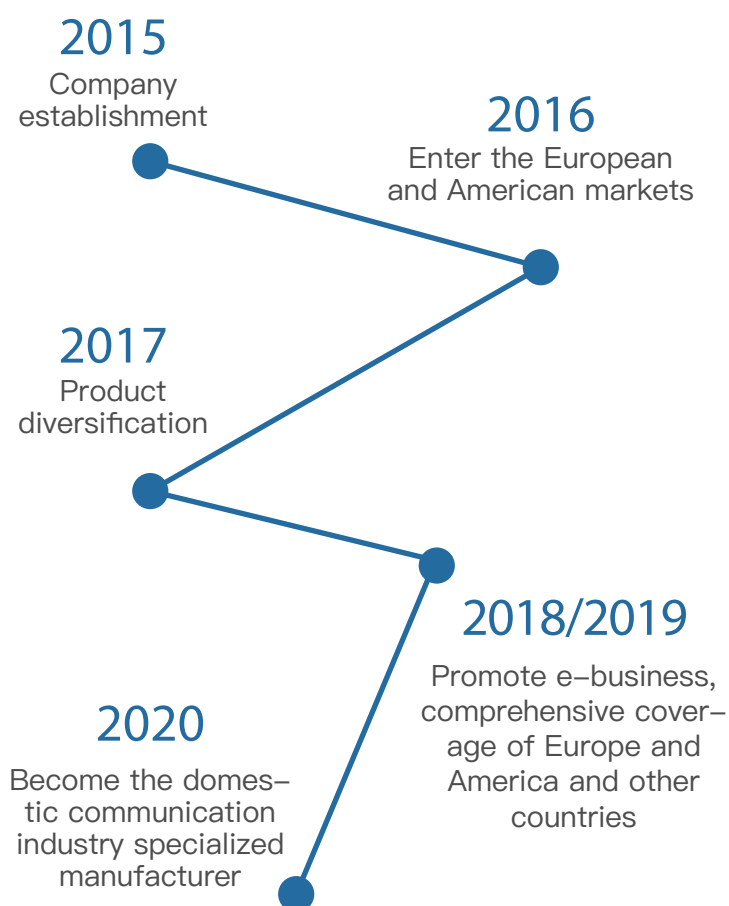
2022 CATALOGUE



Professional Manufacturer In The Optical Communication Industry

COMPANY PROFILE

KomShine Technologies Limited. is a high-tech enterprise integrating R&D, production and sales.



KomShine Technologies Limited. is a high-tech enterprise integrating R&D, production and sales. The launched optical fiber fusion splicer, OTDR, optical fiber end face inspection, optical fiber end face cleaning and other series of products are favored by users at home and abroad. It has passed the ISO9001 quality system certification of the Great Wall Quality Assurance Center, and its products have passed the EU CE safety certification and Rohs certification.

CONTENT DIRECTORY



Fiber Fusion Splicing

FX39 Six Motor Core Alignment Fusion Splicer 03

EX39 Handheld FTTx Fusion Splicer 04



OTDR

QX55 OTDR 05

QX50 OTDR 06

KFLC-1/2 OTDR Dead Zone Eliminator 07



Test & Measurements

KPN-35 PON Optical Power Meter 08

KPV-53 OPM & VFL 09

KPM-35 Optical Power Meter

KLS-35 Optic Light Source 10

KLS-25M Mini Light Source

KPM-25M Mini Optical Power Meter

KPM-11M Optical Power Meter 11

KFI-40 Optical Fiber Identifier

KFI-35 Optical Fiber Identifier

KFL-11M Visual Fault Locator 12

KFL-11P Visual Fault Locator

Fiber Optic Test Tool Kit



Cleaning & Inspection Items

KIP-600V Fiber Optic Connector Inspection System 13

KFM-200 Fiber Connector Microscope 14

KCC-550/600 Optical Connector Cleaner

KOC-125/250 Optical Connector One-Click Cleaner

FOCP Fiber Optic Cleaning Platform 15

FOCW Fiber Cleaning Wipes

Fiber Optic Clean Tool Kit



Contact Us

Contact us

16

Fiber Fusion Splicer

FX39 Six Motor Core Alignment Fusion Splicer

6s splice in SM Quick Mode
 16s heat shrink time
 Electrode life: 5000 times
 7800mAh Battery Capacity, Typical 400 Cycles (Splice&Heat) per Charge
 Average loss under 0.01dB
 Saved 10000 groups splicing results 2000 sets of Images
 4.3" color high resolution (800 x 480) display
 USB interface; Convenient for data download and software update
 320X(X-axis or Y-axis)/(X-axis or Y-axis)
 Automatic arc calibration by air pressure and temperature
 It's widely used in the long-haul trunk line network
 and can be compatible with the FTTx and Access network installation



Splice Method	6 Motors Real Core Alignment
Applicable Fibers	SM(ITU-T G.652&G.657) / MM(ITU-T G.651) / DS(ITU-T G.653) / NZDS(ITU-T G.655)
Typical Splice Loss	SM: 0.02dB / MM: 0.01dB / DS: 0.04dB / NZDS: 0.04dB / G.657: 0.02dB ★①
Fiber Diameter	Cladding: 80-150μm, Coating: 100~1000μm
Fiber Cleave Length	8~16 mm
Return Loss	>60dB
Splicing Time	SM Quick mode : 6 sec / SM Average: 15 Sec.
Heating Time	Quick mode 16 sec.(SM G652 250μm 40mm Sleeve) adjustable
Battery	7800mAh Battery Capacity, Typical 400 Cycles (Splice&Heat) per Charge ★②
Display	4.3" color high resolution (800 x 480) display
Terminal	USB2.0
Electrode Life	5000 arcs, can be extended by using an electrode grinder ★③

★① With identical fibres(in room temperature). Measured by cut-back method relevant to ITU-T and IEC standards.

★② Splice & Heat cycles may vary depending on the battery status and the operating environment.

★③ Electrode life may vary depending on the operating environment.

EX39

Handheld FTTx Fusion Splicer

Extended-life electrodes, 5,000 splices (replaceable)
 Auto Splice & Auto Heat Function
 World's most compact, Lightweight and Fast Design
 Stable aerial operation Design
 Tool-less Electrodes replacement
 Fast-splicing 8s, Fast-heating 18s
 Support 120 times of splicing + heating when fully charged
 Innovatively no need tools to replace electrodes



Splice Method	Active Clad-Alignment
Applicable Fibers	SM(ITU-T G.652&G.657) / MM(ITU-T G.651) / DS(ITU-T G.653) / NZDS(ITU-T G.655)
Compatible Fiber/Cable	0.25~3.0 mm / indoor cable
Typical Splice Loss	SM: 0.03dB / MM: 0.01dB / DS: 0.04dB / NZDS: 0.04dB / G.657: 0.03dB ★①
Fiber Diameter	Cladding: 80~150μm, Coating: 100~1000μm
Fiber Cleave Length	8~16 mm
Return Loss	>>60dB
Splicing Time	SM Quick mode : 8 sec / SM Average: 15 Sec.
Heating Time	Quick mode 18 sec.(SM G652 250μm 40mm Sleeve) adjustable
Electrode Lif	5000 arcs (replaceable) ★③
Protection Sleeve Length	20mm, 30mm, 40mm, 50mm, 60mm
Fiber Holde	Replaceable
Display	3.5" color high resolution (800 x 480) display
Terminal	USB2.0
Battery	3400mAh Battery Capacity, Typical 120 Cycles (Splice&Heat) per Charge ★②
Power Supply	AC Input 100~240V, DC Input 9~14V
Results Storage	The last 10,000 splice records and 2,000 result images

★① With identical fibres(in room temperature). Measured by cut-back method relevant to ITU-T and IEC standards.

★② Splice & Heat cycles based on 40mm shrink tube/0.25mm fiber,may vary depending on the battery status and operating environment.

★③ Electrode life may vary depending on the operating environment.

OTDR

OPTICAL TIME-DOMAIN REFLECTOMETER

QX55

OTDR

Compact, rugged, lightweight/0.7kg
 All new UI design with innovation
 Up to 32dB High dynamic range
 1m short event dead zone
 Built-in OPM、SLS、VFL、RJ45、FIP Modules
 Link Map & Pass/Fail judgment functions
 3-Year Extended Warranty
 FTTx/PON testing through splitters



Water resistant



Drop resistant



Dust resistant



Brand-new UI Design

Model	Q55-S	Q55-P
Wavelength (nm)	SM 1310/1550	PON 1310/1550/1625 (built-in filter)
Dynamic range (dB)	32/30	32/30/28
Number of optical port	1	2
Applicable fiber	SM (ITU-T G.652)	
Distance range (km)	0.5,1,2,5,10,20,35,50,75,100,150,200	
Pulse width (ns)	5,10,20,50,100,200,500,1000,2000,10000,20000	
Event dead zone*1 (m))	1	
Attenuation dead zone*2 (m)	3.5	
Number of sampling points	Max. 256000	
Sampling resolution	Min. 0.04m	
Distance measurement accuracy	$\pm(0.75 \text{ m} + \text{Measurement distance} \times 2 \times 10^{-5} + \text{Sampling resolution})$	
Loss measurement accuracy	$\pm 0.03 \text{ dB/dB}$	
Return loss measurement accuracy	$\pm 2 \text{ dB}$	

QX50

OTDR

- Dynamic range: 30/28dB
- Event deadzone: <1.8m
- 850-1625nm Wavelength
- Connector type: SC/ST/FC/LC connector
- USB interfaces, supporting USB stick and printer and direct cable download to PC via ActiveSync
- Memory capacity >800 traces
- Built-in lithium battery with high capacity for over 8 hours of operating life
- Display: Color LCD



Model	QX50-M	QX50-S	QX50-P	QX50-MS
Wavelength(nm)	850/1300	1310/1550	1310/1550/1625	850/1300+1310/1550
Build-in VFL	Y		N	
Applicable fiber	SM(ITU-T G.652)			
Distance range(km)	0.1,0.5,1,2,5,10,20,30,50,100,200,240			
Pulse width(ns)	5,20,40,80,160,320,640,1280,2560,5120,10240,20480			
Event dead zone(m)	1.8			
Attenuation dead zone(m)	3			
Dynamic range(dB)	21/23	32/30	32/30/28	21/23+32/30
Optical connector	FC/UPC (SC/LC/ST can be selected)			
Laser class	Class 1m			
Memory of trances	10,000 pieces			



Shock resistant



Water resistant



Drop resistant



Dust resistant

KFLC-1

OTDR Dead Zone Eliminator

Compact, rugged, lightweight

100m、300m、500m、1km、2km lengths standard

Available with a variety of connector styles

For use as OTDR launch cable

For use as OTDR receive cable

Use to test link loss with an OTDR

Measure insertion loss and reflectance of near- and far-end connections of a fiber optic link using an OTDR



KFLC- 2

OTDR Dead Zone Eliminator

Compact, rugged, lightweight

100m、300m、500m、1km、2km lengths standard

Available with a variety of connector styles

For use as OTDR launch cable

For use as OTDR receive cable

Use to test link loss with an OTDR

Measure insertion loss and reflectance of near- and far-end connections of a fiber optic link using an OTDR



Optical Test Meter

KPN-35 Optical Power Meter

For PON Network Testing

Test 3 wavelengths separately and simultaneously

Used in Burst mode measurement of 1310nm upstream

One-year warranty and Three-year recommended calibration interval

Providing simultaneous measurement for all three wavelengths on the fiber(1490nm, 1550nm,1310nm).



Standard SC interface

Wavelength	1310nm	1490nm	1550nm
Isolation Degree with	1490nm>40dB	1310nm>40dB	1310nm>40dB
Filtering Function	1550nm>40dB	1550nm>30dB	1490nm>30dB
Measurement Range	-40dBm~ +16dBm	-50dBm~ +16dBm	-50dBm~ +23dBm
Spectral Passband (nm)	1260~1360	1480~ 1500	1539~1565
Threshold Sets	5 Configurable threshold sets with toolbox software		
Connector Type	SC/UPC (customizable other types)		



KPV-53 Optical Power Meter & Visual Fault Locator

- 2.5mm universal interface
- ±0.2 dB accuracy
- Wavelengths 850–1625nm
- 0.01 dB Resolution
- Measurement Range –70~+6dBm
- Manual calibration
- Waterproof keys suitable for various outdoor environments
- Silicone jacket, anti-drop 2m
- Equipped with LED light, not afraid of the dark



Standard SC interface

Wavelength	800 ~ 1700 (nm)
Type of applicable fibers	SM MM
Optical adaptor type	FC/SC + 2.5 Universal connector
Power range	–70 ~ +6dB/ –50 ~ +26dBm
Calibration accuracy	±0.2 (dB)
Calibration wavelength	850/980/1300/1310/1490/1550/1625(nm)



KPM-35 Optical power meter

- 2.5mm universal interface
- ±0.2 dB accuracy
- Wavelengths 850–1625nm
- 0.01 dB Resolution
- Measurement Range –70~+6dBm/ –50~+26 dBm
- Manual calibration
- Silicone jacket, anti-drop 2m
- Equipped with LED light, not afraid of the dark
- Waterproof keys suitable for various outdoor environments



KLS-35 Fiber Optic Light Source

2.5mm universal interface + SC Adaptor

Typical output power: -5dB

Wavelengths : 850nm-1550nm

Drop proof: 2m

Low power function display

Waterproof key suitable for all kinds of outdoor environments

Silicon shell protection design: shock proof & drop proof

LED backlight



Standard SC interface



KLS-25m Mini Fiber Optic Light Source

2.5mm universal+SC adapter

Output power: -5dB

Wavelength: 1310/1550nm

Drop protection: 2m

Low power function display

Water-resistant keys

Pocket size design

LED lighting



Standard SC interface



KPM-25m Mini Optical Power Meter

2.5mm universal interface

±0.2 dB accuracy

Wavelengths 850-1625nm

0.01 dB Resolution

Measurement Range -70~+6dBm

Manual calibration

Waterproof keys suitable for various outdoor environments

Silicone jacket, anti-drop 2m

Equipped with LED light, not afraid of the dark



KPM-11M Optical Power Meter

Pocket Design, mini and compact

Accuracy lower than $\pm 0.2\text{dB}$

60 Hours continuous use

Users can calibrate the value manually

Range of measurement: $-70\sim+6\text{dBm}$ / $-50\sim+26\text{dBm}$

7 Wavelengths (850/980 /1300/ 1310/1490/1550/1625nm)

Universal adapter design, suit for SC, FC, ST Connector

Built in LED Light, Easy to operate in the dark environment

Lithium Battery is Optional, USB Charging, easy to use



KFI-40 Optical Fiber Identifier

Suitable for 0.25/ 0.9/ 2.0/ 3.0mm fibers

Test sensitivity: -40dBm to 10 dBm

Easy to carry, no need to replace the chucks

Configure VFL function, 2.5mm universal

Test distance up to 5km, high stability

Strong light source, strong penetrating power

Be equipped with LED light, more convenient to check the fibers in the dark

LED backlight display, suitable for various environments without auxiliary lighting



KFI-35 Optical Fiber Identifier

Display relative optical power

Test online without interruption of the link

Recognize the signal of 270Hz, 1KHZ, 2KHz

Comes with a hood to provide more accurate test results outdoors

Identify the propagation direction of light, sound alarm reminder

LED display, 4 fixtures support bare fiber, 0.9mm, 2mm, 3mm fiber

Test sensitivity -40dBm to 10dBm



KFL-11M Visual Fault Locator

Pocket size

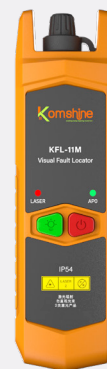
Measuring up to 30km, high stability

Silicone dust cap

2.5mm Universal adaptor for FC/ SC/ ST

With LED lights for dark environment

Lithium battery USB-charging / AA Batteries (optional)



KFL-11P Visual Fault Locator

Bright red laser at 650nm

Pulsed and CW operation

Outpower: 1mw,10mw,20mw,30mw

2.5mm universal adaptor for FC/ SC/ ST

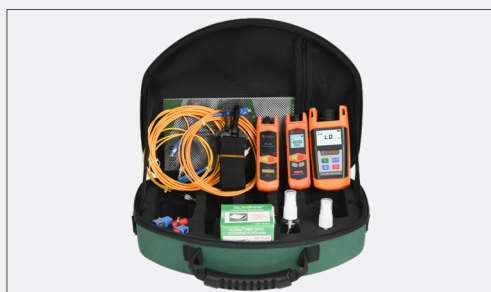
40h Continuous work

1.25 mm adapter for LC (optional)

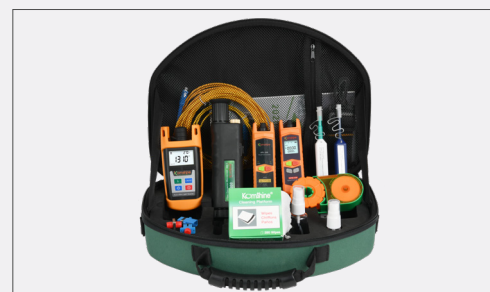


OPTICAL FIBER TEST KIT

KOMSHINE KLT series optical fiber test kits are suitable for fiber loss testing, fiber end face cleaning, fiber break point detection and other fields. It contains all necessary tools for testing, cleaning, inspection, etc.



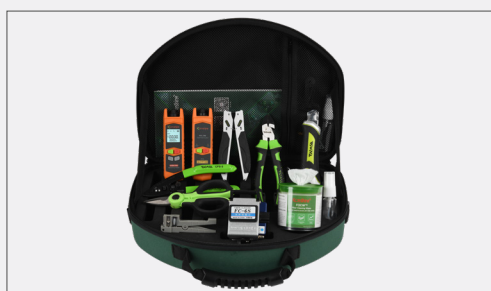
KLT-12E



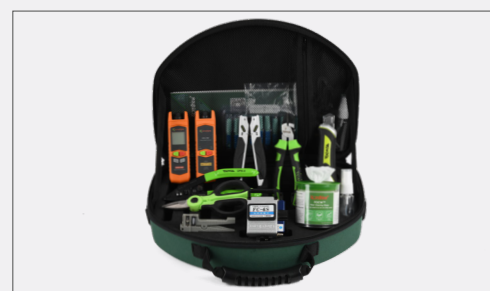
KLT-15D

FTTH TOOL KIT

KOMSHINE KFH series FTTH tool set is suitable for FTTH fiber to the home, fiber optic connector field production, fiber loss test, fiber cleaning and other fields. It contains all the necessary tools for fiber cutting, inspection, cleaning, testing, etc.



KFH-12E



KFH-63D

Cleaning & Inspection Items

KIP-600V Fiber Optic Connector Inspection System

400 Times magnification, the stain is clearly visible

Compatible / FC/SC/ST/LC/SC female connector/LC male connector

4000mAH Large capacity lithium power, 20 hours standby

Rotary metal bracket, stable and convenient

3.5 Inch HD LCD display

1/3 Inch sensor, 300,000 effective pixels

Removable silicon case

Small size, one-handed, convenient and fast

Real time video, support extend t-flash card



Magnification	400X
Playback	AVI
Format	TF
Compatible memory cards	8 (GB)
USB	1.1/ 2.0
AC adapter	DC 5V/ 2A
Internal battery	Lithium battery 4000 mAh



KFM-200 Fiber Connector Microscope

The amplification rates of 200 times

Imported coated lens, stain clearly visible

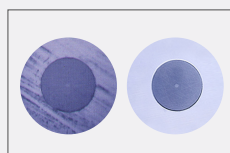
White LED, rated for 100,000 hours; 20 hour battery life

Grinded silica gel shell, anti-skid, anti-fall and anti-shock

Supporting SC/FC/ST/LC

1.25 mm & 2.5mm Adapter

Small size, one-handed, convenient and fast



KCC-550/600 Optical Connector Cleaner

Cleaning fast, efficient, repeatable

Dry special anti-static microfiber fabric

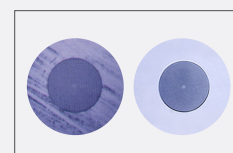
Provides 500+ times of cleaning

Each cleaning is very effective and produce a new surface

Hand control operation, lightweight design, replaceable core

It is suitable for cleaning the end face of FC/SC/LC/ST/MU/D4/DIN

optical fiber connector PC/APC



KOC-125/250 Optical Connector One-Click Cleaner

Simple pushing motion to engage tool

Over 800+ engagements per unit

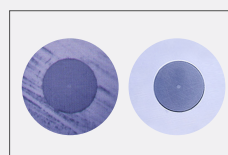
Dry cleaning strand eliminates the need for solvents to be effective

Crush resistant to over 250N

Impact resistant to survive drops over 1.5m

Cleans SC/ST/FC/E2000 (APC/UPC) and other 2.5mm

Cleans LC/MU (APC/UPC) and other 1.25mm



FOCP Fiber Cleaning Platform

Wet & dry dual use, cleaning with alcohol

280 Pieces continuous point break design

Cleaning times >1000

Industrial grade anti-static embossing dust-free cloth



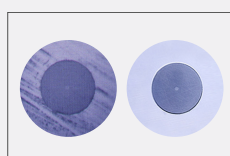
FOCW Fiber Cleaning Wipes

Soft texture, dry & wet dual-use

Economical replaceable cleaning core

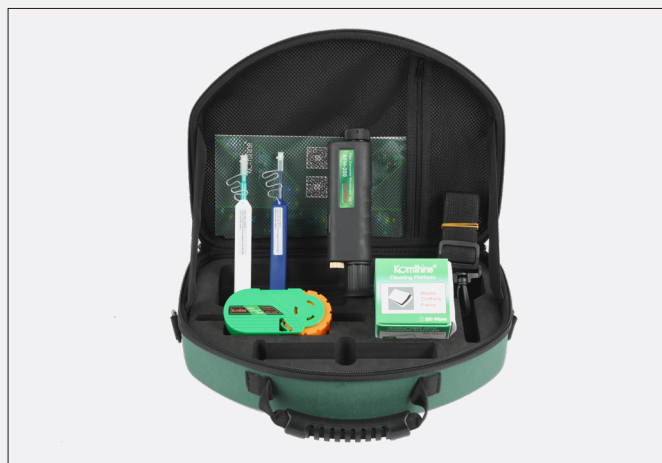
Thick non-woven cloth wipe material, no dust

Portable pull design, clear break point is easy to tear

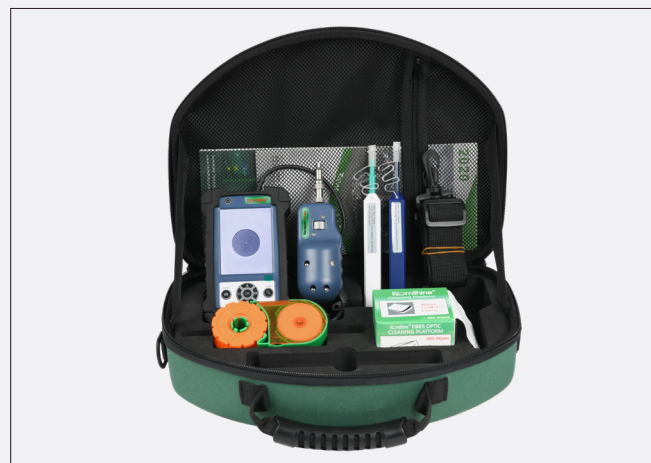


OPTICAL FIBER CLEANING TEST KIT

KOMSHINE KFH series FTTH tool set is suitable for FTTH fiber to the home, fiber optic connector field production, fiber loss test, fiber cleaning and other fields. It contains all the necessary tools for fiber cutting, inspection, cleaning, testing, etc.



FIC-05E



KIC-05D

CONTACT US

Thank you for coming to KomShine. If you have any questions, please contact us in time.
We will reply to you as soon as possible and provide you with the most sincere service,
thank you!



Website



+86 25 66047688



info@komshine.com



2F Bldg. D Qinheng Tech. Pk.
Nanjing, JS, 210001, China



www.komshine.com